



IREDELL MUSEUMS

EDUCATORS' GUIDE

2023–2024

PROGRAMS CORRELATED TO
NC STANDARD COURSE OF STUDY

TABLE OF CONTENTS

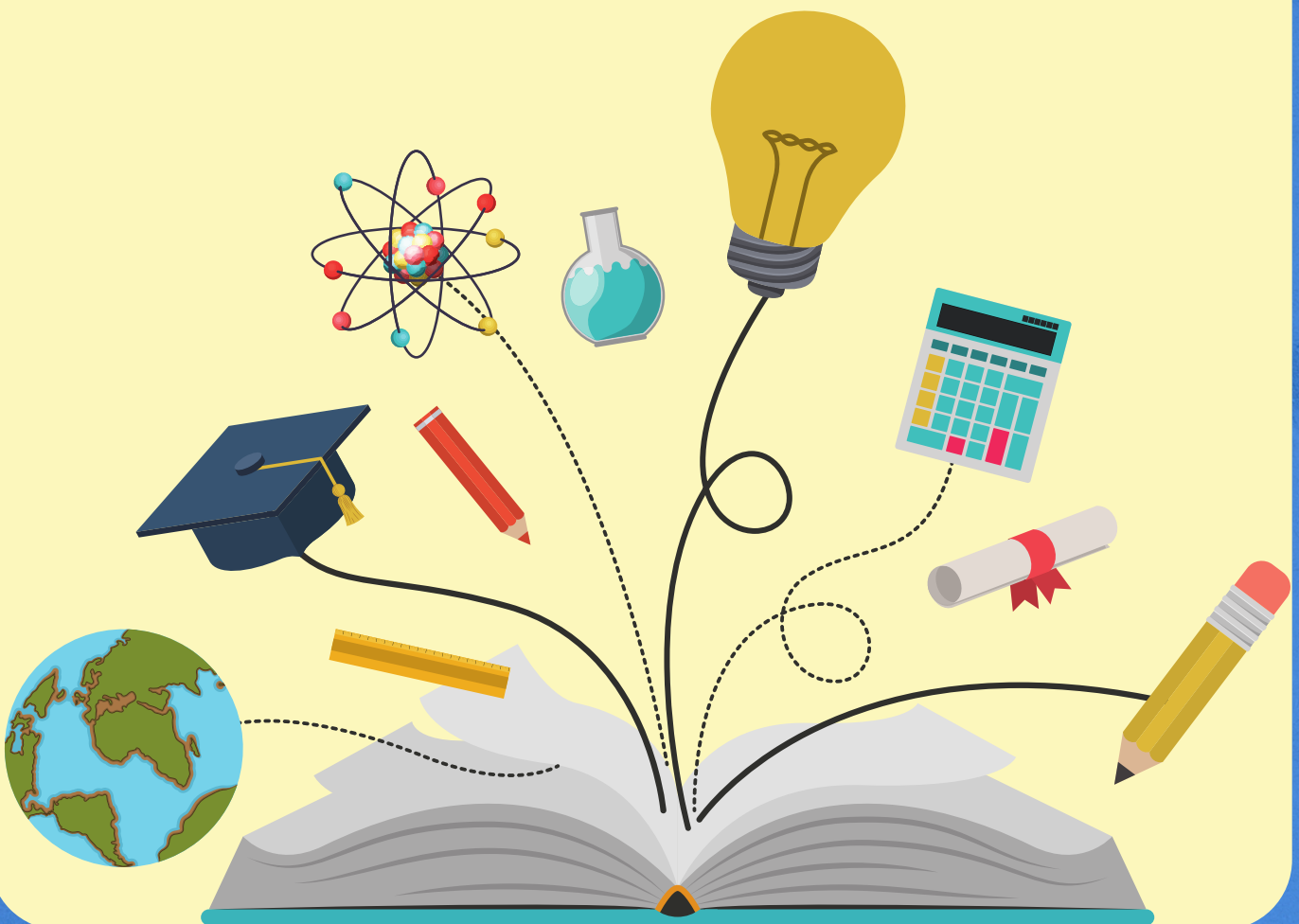
ABOUT IREDELL MUSEUMS

GENERAL INFORMATION

TIMES AND FEES FOR PROGRAMS

PROGRAMS OFFERED

TO RESERVE A PROGRAM



About Iredell Museums



Iredell Museums has been a place of learning and exploration for over 60 years. The Museum was founded by a group of citizens who wanted a place for Iredell County residents to learn about the world around them. The Museum was originally located in the 1899 water pump station on Museum Road.

In the 1960s and 70s, the Museum expanded from three acres to 20 and added several historic log cabins to its collection, which began the formation of what is now called Gregory Creek Homestead. The historic buildings date from 1790–1890 and are all from Iredell or Alexander Counties. The museum also houses artifacts from the area including early American Indian artifacts and 19th century clothing, as well as a sizable art collection. Also in the 1970s, trails on the Gregory Creek grounds were cleared and marked by local Boy Scout troops, providing walking trails for visitors to explore the wooded area that serves as a habitat for native flora and fauna.

In 2004, after a series of floods, the Museum made the decision to vacate the pump station and find a new home. At this point, the Museum also merged with the Children's Museum of Iredell County and became Iredell Museums.

The new tagline – "Children, Arts, Heritage" – was exemplified in its three locations: Kids @ Play, the Court Street Gallery, and Gregory Creek Homestead. In 2015, the Kids @ Play location was closed, and the hands-on elements were integrated into the Court Street Gallery space.

Today, the Museum hosts interactive, family-friendly exhibits and programs as well as living history programs at Gregory Creek Homestead.





General Information

LOCATION:

134 Court Street
Statesville, NC 28677

HOURS:

Wednesday– Friday: 10AM – 3PM
Saturday: 11AM–4PM

BUS PARKING:

Because of our downtown location, parking is limited. Buses may drop off students on Court St or Meeting St or may park at the Farmers Market Parking lot (corner of Meeting and Front) and walk one block to the Museum.

PARKING:

Free two hour parking is available on Court Street in front of the Museum and along South Meeting Street. Free public parking lots are also available throughout downtown Statesville.

DINING:

We do not have dining facilities within the museum; however there are several restaurants in the downtown area.
Please feel free to bring bag lunches!

Gregory Creek Homestead
1335 Museum Road
Statesville, NC 28625

The grounds of Gregory Creek Homestead and the walking trails around it are open every day during daylight hours.
The cabins are only open for living history programs and special events.



Times and Fees for Programs

Times:

Morning 9AM– 12 PM

OR

Afternoon 12:30PM– 3:30 PM

THE MUSEUM WILL BE CLOSED TO THE PUBLIC
FOR FIELD TRIP PROGRAMS

Minimum: 10 students

Maximum: 40 students

Fees:

NC sales tax is applicable for admission prices
Field trip program fees are not taxed

Museum Only Admission: \$3 per student

Programs: \$6 per student

Teachers and Bus Drivers: FREE

1 Chaperone FREE per 5 students

Additional Chaperones: \$5 per person



Programs Offered

Want a program for older grades?
Programs can be tailored to grade level with notice.

Can You Dig It? Archaeology Grades 3–5

Standards: RI.3.1–10, RI.4.1–10, RI.5.1–10, RF.3.2–5, RF.4.2–5, RF.5.2–5, W.3.2, W.3.5, W.3.6, W.4.2, W.4.5, W.4.6, W.5.2, W.5.5, W.5.6, SL.3.1–4, SL.4.1–4, SL.5.1–4, L.3.1–6, L.4.1–6, L.5.1–6, 3.PR.4, 4.PR.4, 5.PR.4, NC.3.MD.2, NC.3.G.1, NC.4.MD.1, NC.4.MD.4, NC.5.MD.1, NC.5.MD.2, NC.5.G.1, NC.5.G.3, 3.E.2, 4.P.2, 4.E.2, 4.L.1, 5.P.2, I.1.1–11, 3.B.1, 3.E.1, 3.H.1, 4.B.1, 4.E.1, 4.G.1, 4.H.1, 5.B.1, 5.C&G.2, 5.E.1, 5.G.1, 5.H.1

Learn about the history and process of archaeology
and participate in a mini dig!

Robo Coding Grades 3–5

Standards: RI.3.1–10, RI.4.1–10, RI.5.1–10, RF.3.2–5, RF.4.4, RF.4.5, RF.5.2–5, W.3.5, W.3.6, W.4.2, W.4.5, W.4.6, W.5.2, W.5.5, W.5.6, SL.3.1–4, SL.4.1–4, SL.5.1–3, L.3.1–6, L.4.1–6, L.5.1–6, 3.PCH.3.1, 3.ICR.1.4, 3.MS.1, 3.PR.4, 4.PCH.4.2, 4.MS.1, 4.PR.4, 5.MS.1, 5.PR.4, NC.3.MD.2, NC.3.MD.3, NC.4.MD.1–6, NC.5.OA.3, NC.5.MD.1, NC.5.MD.2, 3.P.1, 3.P.3, 3.L.1, 4.P.1, 4.P.3, 5.P.1, 5.L.1, I.1.1–11

Explore the different forms of coding
and how they work. Learn to program robots!

The Mummy of Al Faiyum K–2

Standards: RI.K.1–10, RI.1.1–10, RI.2.1–10, RF.K.1–5, RF.1.1–5, RF.2.2–5, W.K.2, W.K.5, W.K.6, W.1.2, W.1.5, W.1.6, W.2.5, W.2.6, SL.K.1–5, SL.1.1–5, SL.2.1–4, L.K.1–6, L.1.1–6, L.2.1–6, K.MEH.1–3, K.PCH.1.1, K.ICR.1.1, K.MS.1, K.MC.2, K.PR.4, 1.MEH.1, 2.PR.4, NC.1.MD.3, K.P.1, K.P.2, 1.L.2, K.B.1, K.C&G.1, K.G.1, K.G.2, K.H.1, 1.B.1, 1.E.1, 1.G.1, 1.G.2, 1.H.1, 2.E.1, 2.G.1, I.1.1–9

Discover the history of culture of Margaret the Mummy. Learn about
where she came from and participate in hands on activities.

Senses Science! K–2

Standards: RI.K.1–10, RI.1.1–10, RF.K.1–5, RF.1.1–5, RF.2.2–5, W.K.2, W.K.5, W.K.6, W.1.2, W.1.5, W.1.6, W.2.5, W.2.6, SL.K.1–5, SL.1.1–5, SL.2.1–4, L.K.1–6, L.1.1–6, L.2.1–6, K.MEH.1–3, K.PCH.1.1, K.ICR.1.1, K.MS.1, K.MC.2, K.PR.4, 1.MEH.1, 2.PR.4, K.P.2, 1.L.2, 2.P.1, I.1.1–9

Investigate the 5 senses (sight, touch, taste, smell, and hearing) and
how they help the human body function!

Light Science! K–2

Standards: RI.K.1–10, RI.1.1–10, RF.K.1–5, RF.1.1–5, RF.2.2–5, W.K.2, W.K.5, W.K.6, W.1.2, W.1.5, W.1.6, W.2.5, W.2.6, SL.K.1–5, SL.1.1–5, SL.2.1–4, L.K.1–6, L.1.1–6, L.2.1–6, K.MEH.1–3, K.PCH.1.1, K.ICR.1.1, K.MS.1, K.MC.2, K.PR.4, 1.MEH.1, 2.PR.4, K.P.1, K.P.2, 1.L.2, I.1.1–9

Play with light and see the way it interacts with the world around us.



To Reserve a Program

Please visit our website at www.iredellmuseums.org

Hover over the Explore tab

Toggle down to Education

Click on Field Trips and fill out a registration form

RESERVATIONS ARE NOT CONFIRMED UNTIL
YOU RECEIVE A CONFIRMATION EMAIL
FROM IREDELL MUSEUMS.

Please register for field trips AT LEAST 3 weeks
in advance of proposed attendance date.

Should you register outside of this time perimeter,
we will do our best to accommodate you, but cannot
guarantee a visit on your preferred day.

WE CAN'T WAIT TO SEE YOU!

